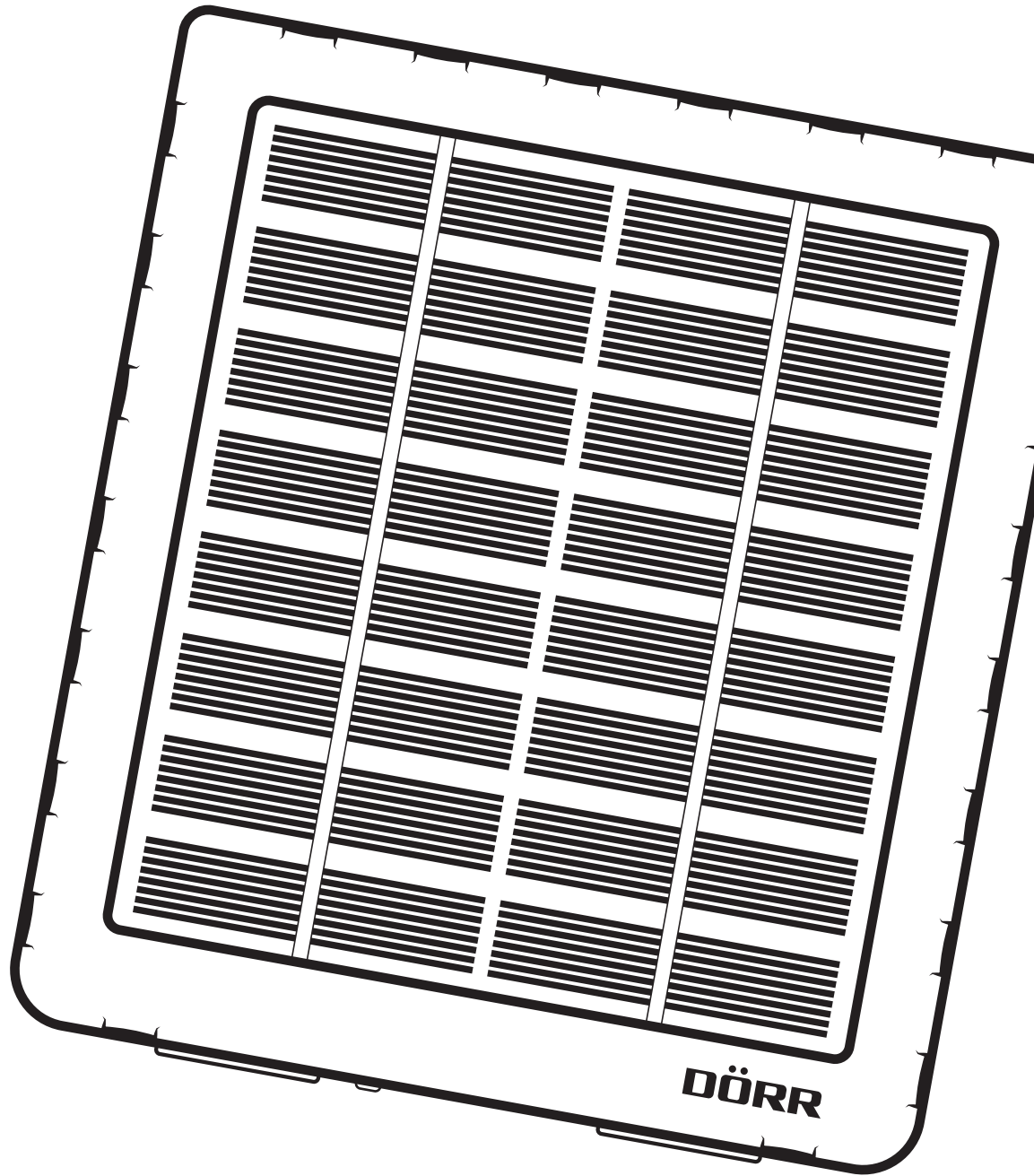


# DÖRR

---

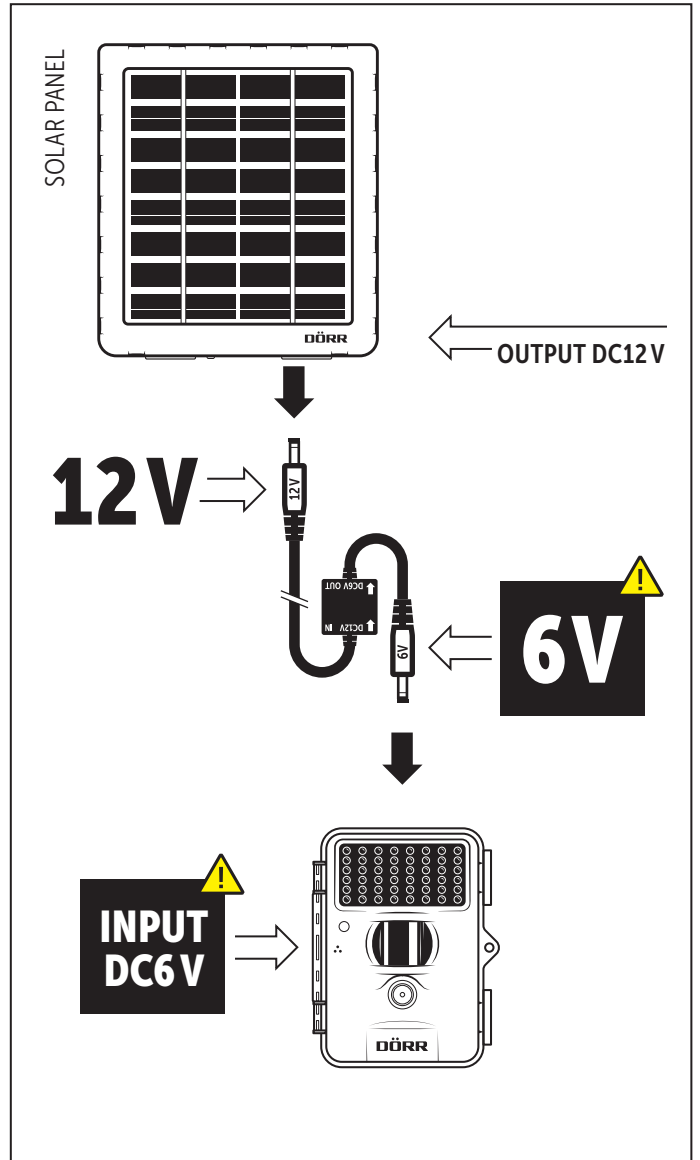
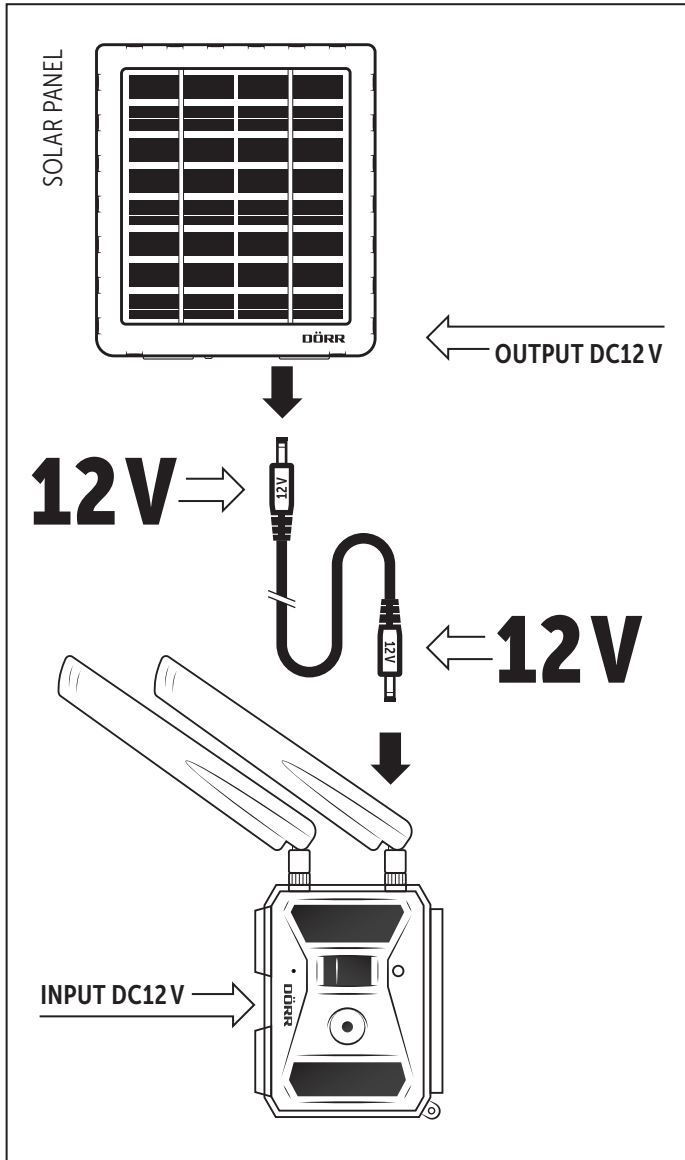
## SOLAR PANEL

**GB** INSTRUCTION MANUAL



## Li-1500 12V/6V

**CAUTION! CAUTION! CAUTION! CAUTION! CAUTION! CAUTION!**





**THANK YOU** very much for choosing a quality product by DÖRR.

**Please read the instruction manual and the safety hints carefully before using the device for the first time.**

Keep the operating instructions together with the device for reference. If other people use this device, provide them with these instructions. If you sell the unit, this manual forms an integral part of the device and must be supplied with it.

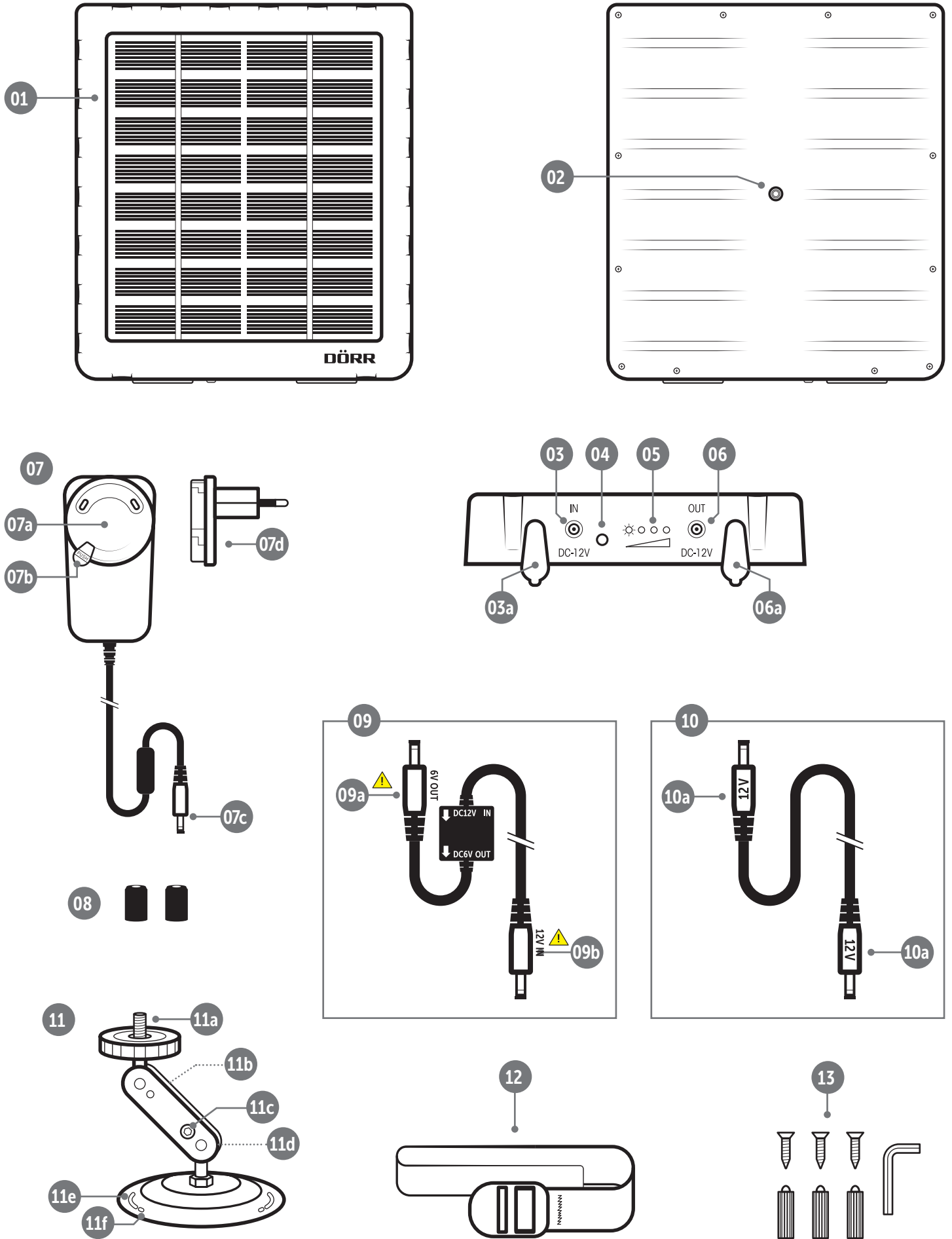
**DÖRR is not liable for damage caused by improper use or failure to observe the operating and safety instructions.**

In the event of damage caused by improper handling or by external influence, the guarantee or warranty claim becomes void. Any manipulation, structural modification of the product or opening of the housing by the user or an unauthorised third party shall be considered improper handling.

## 01 | ⚠ SAFETY HINTS

- ⚠ **CAUTION:** To prevent damage to devices with an operating voltage of 6 volts, only connect your device with the 6V/12V connection cable (09). Be sure to plug the 12V IN (09b) barrel connector into the OUT DC12V output socket on the solar panel (06) and the 6V OUT barrel connector (09a) into the device to be operated.
- Your solar panel is fitted with a weatherproof housing according to protection class IP54 (dust and splash waterproof). So, the solar panel can be used outdoors. Nevertheless, protect the solar panel from extreme weather conditions.
- Never leave the solar panel unattended while charging. After charging disconnect the solar panel from power supply.
- If device is not in use for a long period of time, we recommend to charge the built-in battery to about 75%. The storage of an empty or fully charged battery will shorten its life.
- Do not short-circuit or disassemble the solar panel and do not throw into fire – **risk of explosion!**
- Do not submerge or throw the solar panel into water.
- Do not operate or touch the solar panel or the AC adapter with wet hands.
- Protect the device against impacts. Do not use the device if it has been dropped. In this case a qualified electrician should inspect the device before you use it again.
- Do not attempt to repair the device by yourself. **Risk of electric shock!** When service or repair is required, contact qualified service personnel.
- **The device is not a toy! To prevent accidents and suffocation keep the device, the accessories and the packing materials away from children and pets.**
- People with physical or cognitive disabilities should use the device under supervision.
- People with cardiac pacemakers, defibrillators or any other electrical implants should maintain a minimum distance of 30 cm, as the device generates magnetic fields.
- Protect the device against dirt. Never use aggressive cleansing agents or benzine to clean the device. We recommend a soft and slightly damp microfiber cloth to clean the outer parts of the device. **Before cleaning make sure to take off from power supply!**
- Store the device in a dust-free, dry and cool place.
- If the device is defective or without any further use, dispose of the device according to the Waste Electrical and Electronic Equipment Directive WEEE. For further information, please contact your local authorities.

02 | ILLUSTRATION OF PARTS



## 03 | PRODUCT DESCRIPTION

Use the **DÖRR Solar Panel Li-1500 with internal 1500mAh Li-Ion battery** for a sustainable and significant longer runtime of your **DÖRR SnapShot game & surveillance camera** or other devices with **12 volt or 6 volt socket**. The advanced solar panel with a **maximum output power of 2 watts** does not require direct sunlight - the solar cell produces sufficient energy even in cloudy weather and in winter. Protected according to **IP54**, the solar panel defies even adverse weather conditions. With the supplied **bracket**, the solar panel can either be screwed in place or mounted with the help of the **fastening strap**. With the movable joints of the bracket, you can simply align the solar panel in the direction of the sun.

## 04 | NOMENCLATURE

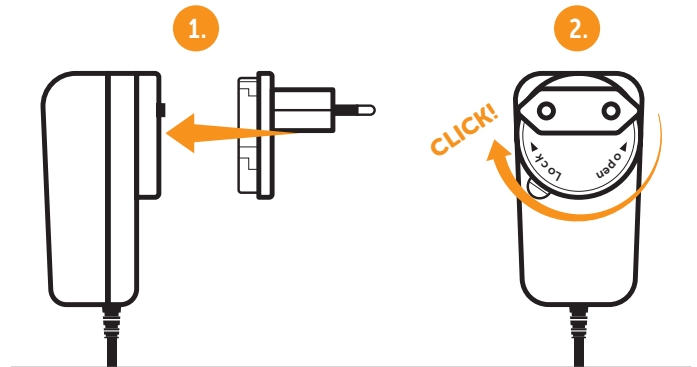
- 01 Solar panel
- 02 Connection thread 1/4"
- 03 Charging socket IN DC 12 V for AC adapter
  - 03a) Rubber cover IN
- 04 Button for LED indicator
- 05 LED charging-/capacity indicator
- 06 Output socket OUT DC12V
  - 06a) Rubber cover OUT
- 07 AC adapter
  - 07a) Socket for EU Adapter
  - 07b) Release button
  - 07c) Connection plug
  - 07d) EU adapter
- 08 Rubber protective caps for barrel connectors
- 09 ⚠ **Connection cable 12 Volt → 6 Volt devices**
  - 09a) Barrel connector 6V OUT ⚠
  - 09b) Barrel connector 12V IN ⚠
- 10 ⚠ **Connection cable 12 Volt → 12 Volt devices**
  - 10a) 2x Barrel connectors 12V
- 11 Bracket
  - 11a) Ball head with 1/4" threaded screw
  - 11b) Allen screw 1
  - 11c) Allen screw 2
  - 11d) Ball joint
  - 11e) 2 Eyelets for mounting strap
  - 11f) 3 Holes for screw fastening
- 12 Mounting strap
- 13 Mounting kit (3 screws with dowels, Allen key)

## 05 | FIRST COMMISSIONING

### 05.1 Charging the battery

**Before first use, please fully charge the built-in Li-Ion battery:**

Place the EU adapter (07d) on the socket (07a) of the AC adapter (07). Turn the EU adapter (07d) clockwise (direction LOCK) until it snaps into place audibly.



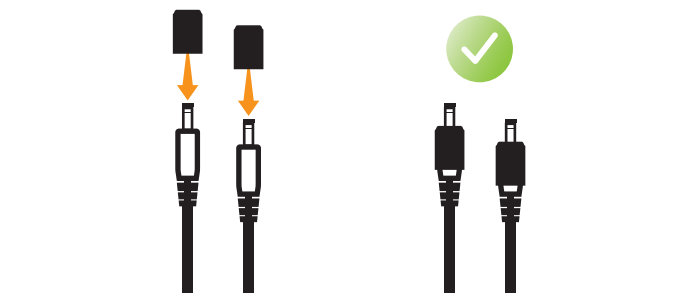
Open the rubber cover IN (03a) on the solar panel and connect the connection plug (07c) with the **charging socket IN DC12V** (03). Plug the AC adapter (07) into a power outlet.

While charging the LED charging -/capacity indicator (05) will flash in red. When the solar panel is fully charged, the LED charging-/capacity indicator (05) will light up in red constantly.

Remove the connection plug (07c) from solar panel and the power outlet. Close the charging socket (03) with the rubber cover (03a).

### 5.2 Rubber protective caps

To ensure an optimal seal between the cable connections, put the 2 protective rubber caps (08) on the two barrel connectors (09a+09b or 2x 10a) of the corresponding connection cable (09 or 10).



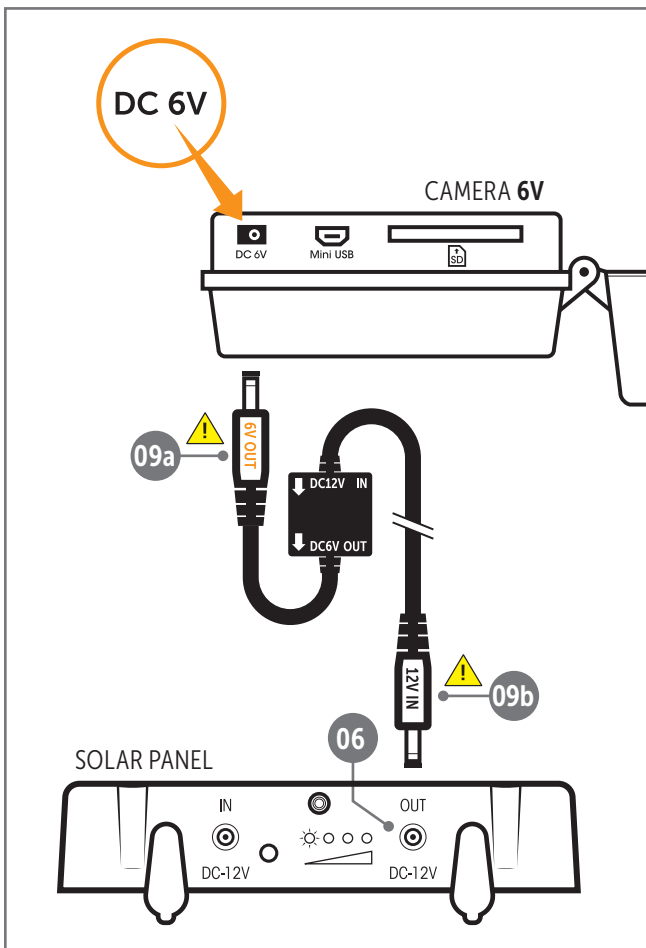
## 06 | USE WITH 6 VOLT DEVICES

### ⚠ CAUTION

To prevent damage to devices with an operating voltage of 6 volts, **ONLY use the connection cable (09) with the small, black converter box to connect your device to the solar panel. Make sure to plug the barrel connector marked with 12V IN (09b) into the OUT DC12V output socket on the solar panel (06) and the barrel connector marked with 6V OUT (09a) into the device to be operated.**

#### *Application example with DÖRR SnapShot surveillance camera 6V:*

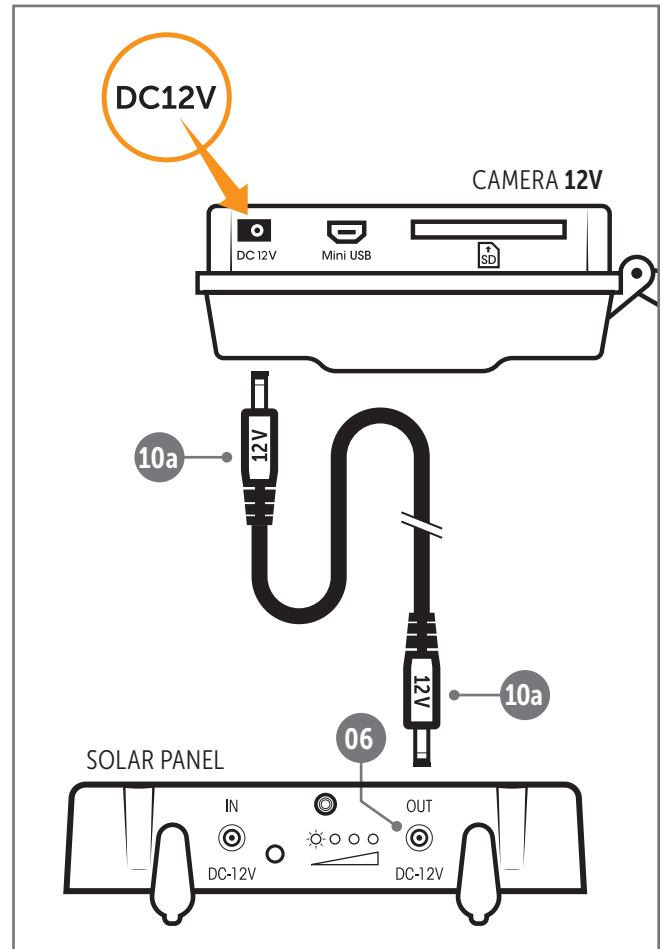
1. Open the rubber cover OUT (06a) on the solar panel.
2. Plug the **barrel connector 12V IN (09b)** of the connection cable (09) into the **output socket DC12V OUT (06) of the solar panel.**
3. Plug the **barrel connector 6V OUT (09a)** of the connection cable (09) into the connection for external batteries on your SnapShot camera.



## 07 | USE WITH 12 VOLT DEVICES

#### *Application example with DÖRR SnapShot surveillance camera 12V:*

1. Open the rubber cover OUT (06a) on the solar panel.
2. Plug one of the two **barrel connectors 12V (10a)** of the connection cable (10) into the output socket DC12V OUT (06) of the solar panel.
3. Plug the **other 12V barrel connector (10a)** of the connection cable (10) into the connection for external batteries on your SnapShot camera.



Turn on the camera as usual – the solar panel will recognise when a consuming device is connected and starts the power supply.

When alkaline/rechargeable batteries are inserted in your SnapShot camera you do not need to remove them when using the solar panel. Your camera will automatically use the inserted battery power, as soon as the external power supply from the solar panel is disconnected.

## 08 | MOUNTING

Screw the ball head (11a) of the bracket (11) in the ¼" connection thread (02) on rear side of the solar panel. Pull the mounting strap (12) through the 2 eyelets (11e) and firmly tighten around a suitable object.

Alternatively, you can use the screws and dowels (13) with the 3 holes for screw fastening (11f) for mounting the solar panel to a wall or similar.

To adjust the solar panel, use the supplied Allen key (13). Loosen/tighten the Allen screw 2 (11c) to adjust the ball joint (11d) and Allen screw 1 (11b) to adjust the angle of the ball head (11a).

## 09 | CLEANING AND STORAGE

Never use aggressive cleansing agents or benzine to clean the device. We recommend a soft, slightly damp microfiber cloth to clean the outer parts of the device. **Before cleaning make sure to take off from power supply!** Store the device in a dust-free, dry and cool place when not in use. **This device is not a toy – keep it out of reach of children. Keep the device away from pets.**

## 10 | TECHNICAL SPECIFICATIONS

Rechargeable battery	<b>Built-in Lithium Ion battery 1500mAh, 7.4 V</b>
Output power max.	<b>2W</b>
Output voltage max.	<b>12V/6V</b>
Output current max.	<b>1600mA</b>
Power adapter	<b>Input: AC100-240V~50/60Hz 0,8A Output: 12V, 2A</b>
Cable length approx.	<b>1,50 m (AC adapter and connecting cables)</b>
Connecting plugs	<b>Barrel connectors 4,0x1,7x10 mm (DC 2.1)</b>
Protection class	<b>IP54</b>
Thread mount ¼"	✓
Housing	<b>Robust plastic housing</b>
Colour	<b>black</b>
Operating temperature approx.	<b>-30°C to +70°C</b>
Relative humidity approx.	<b>5% - 95%</b>
Width approx.	<b>15,5 cm</b>
Height approx.	<b>3 cm</b>
Length approx.	<b>14 cm</b>
Weight approx.	<b>338 g</b>

*DÖRR GmbH reserves the right to make technical changes without notice.*

## 11 | SCOPE OF DELIVERY

- 1x Solar panel
- 1x AC adapter
- 1x Connection cable 12V/12V
- 1x Connection cable 12V/6V
- 2x Rubber cover for DC barrel connectors
- 1x Bracket
- 1x Mounting kit (1x Allen key, each 3x screws and dowels)
- 1x Mounting strap
- 1x Safety hints

## 12 | DISPOSAL, CE MARKING

### 12.1 DISPOSAL OF BATTERY/ACCUMULATOR

Batteries and rechargeable batteries are marked with the symbol of a crossed-out waste bin. This symbol indicates that empty batteries or rechargeable batteries that can no longer be recharged must not be disposed of in household waste. Old batteries may contain harmful substances that can cause damage to health and the environment. As the end user, you are legally obliged to return used batteries (under German battery law, Section 11 Act Revising the Law of Waste-Related Product Responsibility for Batteries and Accumulators). You can return batteries free of charge after use at the point of sale or in your immediate vicinity (e.g. at municipal collection points or in shops). You can also return batteries to the seller by post.

### 12.2 WEEE INFORMATION

The WEEE (Waste Electrical and Electronic Equipment) Directive, which came into force as European law on 13 February 2003, led to comprehensive changes in the disposal of discarded electrical equipment. The primary purpose of this directive is to prevent e-waste while promoting reuse, recycling and other forms of reprocessing in order to reduce waste. The WEEE logo (dustbin) shown on the product and on the packaging indicates that the product must not be disposed of in normal household waste. You are responsible for delivering all discarded electrical and electronic equipment to appropriate collection points. Sorting waste for separate collection and sensible recycling of packaging waste helps to use natural resources more sparingly. Furthermore, e-waste recycling is a contribution to preserving our environment and thus also people's health. Further information on the disposal of electrical and electronic equipment, recycling and collection points can be obtained from local authorities, waste disposal companies, specialist retailers and the manufacturer of the device.

### 12.3 CONFORMITY WITH ROHS

This product complies with the European RoHS Directive on the restriction of the use of certain hazardous substances in electrical and electronic equipment and variations thereof.

### 12.4 CE MARK

The imprinted CE mark complies with the applicable EU standards and indicates that the device meets the requirements of all EU directives applicable to this product.

**DÖRR Solar Panel Li-1500 12V/6V**

Item-No. **204446**

Made in China

**DÖRR GmbH**

Messerschmittstr. 1

D-89231 Neu-Ulm

Fon +49 731.970 37 69

info@doerr.gmbh

www.doerr-outdoor.de